

MINIBLUE_R



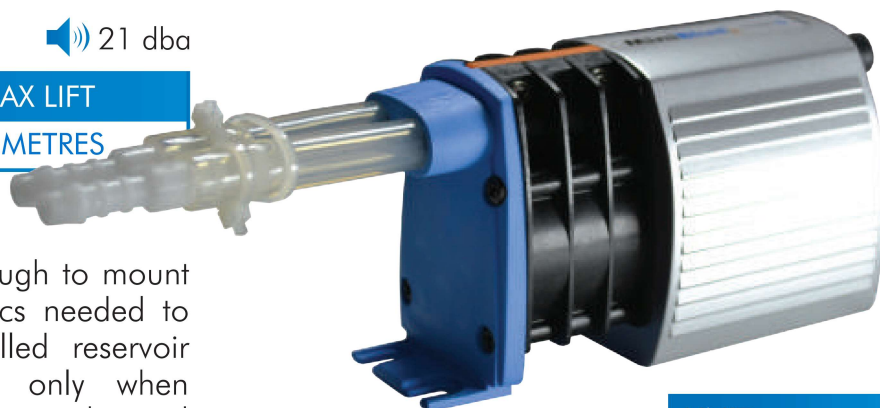
**3 YEAR
WARRANTY**

PERFORMANCE

21 dba

MAX FLOW	MAX HEAD	MAX LIFT
8 L/ HOUR	8 METRES	5 METRES

The MINIBLUE[®] R has been designed to combine performance, reliability and installation flexibility. Compact enough to mount remotely and incorporate the electronics needed to operate the unique thermistor controlled reservoir sensor, the MINIBLUE[®] R operates only when condensate is present. Supplied with a ducting kit and dedicated elbow kit to secure our fault free reservoir.



UNIT

3.5-8 KW

SENSING OPTION

MINIBLUE[®] pump available with:

DUCTING KIT	RESERVOIR
X87-507	X87-509
COLOUR: RAL. 9002	



**NO
MAINTENANCE**

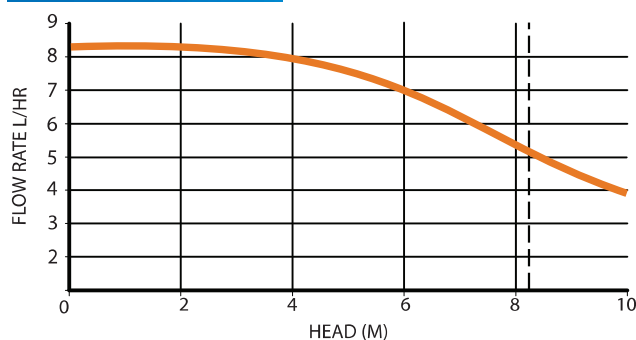
No servicing, no maintenance, no replacement parts. Nothing! A true fit and forget condensate pump.



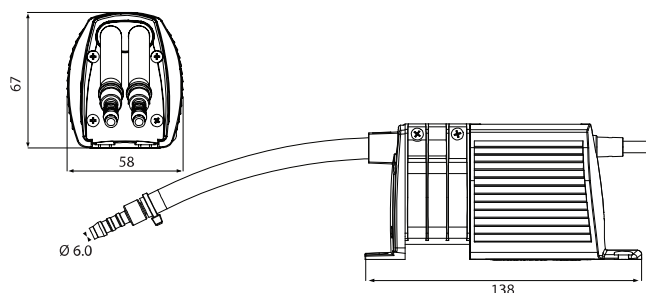
**QUICK
INSTALLATION**

Non modular installation with minimum components when setting up. Fewer components means less time wasted on installation. No siphoning devices or check valves required.

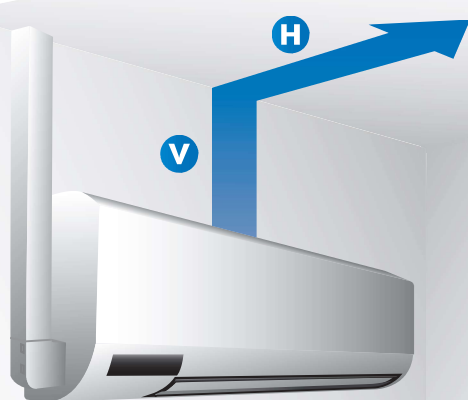
PERFORMANCE



DIMENSIONS (MM)



DISCHARGE PIPE RUN



*8 KW MAX

V (VERTICAL)	H (HORIZONTAL)
8 M	0 M
7 M	3 M
6 M	6 M
5 M	9 M
4 M	12 M
3 M	15 M
2 M	18 M
1 M	21 M

The MINIBLUE[®] R can be mounted in any orientation up to 8m away from the A.C unit.